



## Automated and Accurate

The physioLens is a scientific platform that provides accurate physiological and image-based outcomes of precision cut lung slices (PCLS) in a reproducible fashion. It includes an automated microscope and fluid handling system.

Studying PCLS can help researchers understand pathophysiological mechanisms associated with various respiratory diseases.



### FEATURES

#### Automation

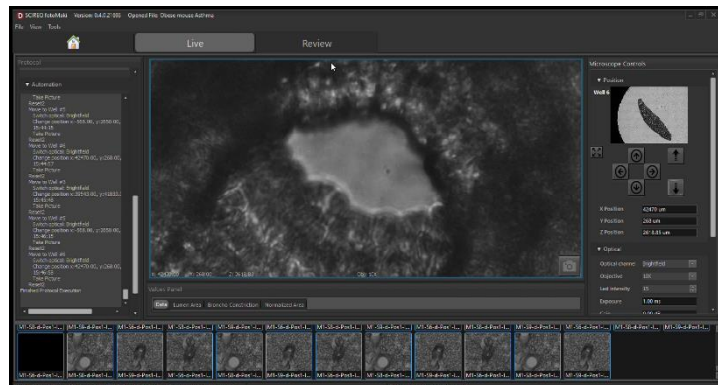
- » The physioLens is capable of capturing images anywhere on slices in a 6 well plate and apply doses without user intervention. Images are analyzed in real-time to provide bronchoconstriction data.

#### Dosing

- » Agonists are provided to the slice without user intervention by a dosing nozzle, that can provide a 95% media exchange in less than 20 seconds. In addition, eight dosing bottles are provided to complete a detailed dose response automatically.
- » Image analysis: Images of airways are automatically processed to capture the lumen contours and then calculate bronchoconstriction.

#### Slice scanning

- » Navigating a slice is not necessary with our airway configuration wizard complete with full slice mapping. Fine tune the positions of interest with our click-and-drag XY navigation.
- » Tissue slices are held in place with a transparent when wet membrane allowing seamless sample-mounting.



**格林科技有限公司**

Good Education and Research Instruments Network

www.gerin.com.tw office@gerin.com.tw

台南 : 06-290-1890 台北 : 02-2696-2955



**Cost effective**



**Reproducible**



**Proven**